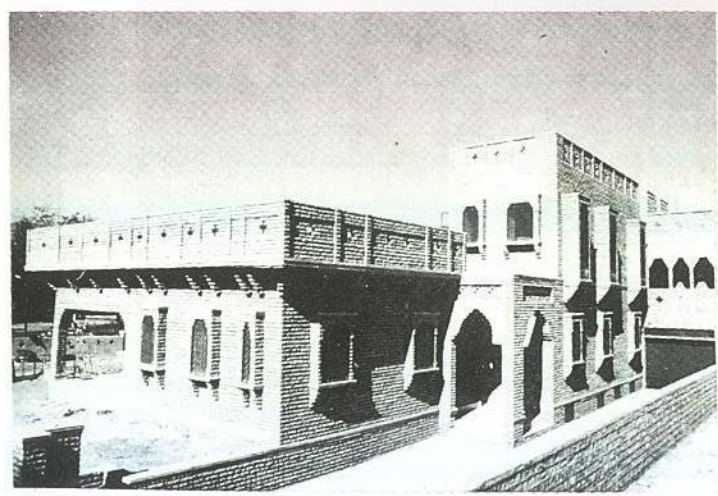


Nilaya Jodhpur, 1988

Architect **A Mridul**

As it was located in the standard subdivision of a plotted city development, the municipal code allowed this house none of the advantages of a traditional Jodhpur *haveli*, and yet the fact that its architecture draws sustenance from the location becomes eminently clear from the way the building plan and spatial elements are designed. Being an outcome of the architect's scrupulous interpretation of history — *torans*, *jalis*, brackets and courtyards are inserted in a formal adaptation of the traditional desert home.

Susceptible to the dry heat of the scorching sun, sandstorms and hot winds of the Thar, the design employs vernacular methods of controlling the local climate, and brings about their disposition in a



compact plan organized around internal courts.

An entrance court with an arched *toran* of corbelled rectangular stones occupies a prominent position in the middle of the house

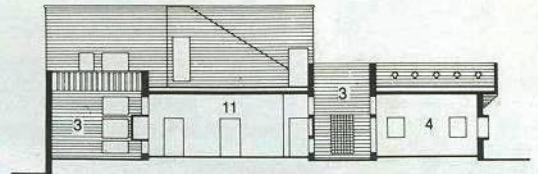
and serves as the main entrance. Internally, traditional elements such as the *jali* and the courtyard are skilfully used to separate or join related parts of the house. Beyond the entrance lobby a *jali* is posi-

tioned to conceal a small courtyard behind. While this courtyard acts as a buffer between public and private areas, the lobby serves to link the two.

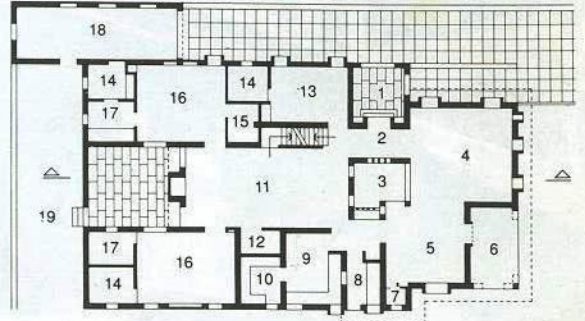
The outer face of the house has little external fenestration. Consequently, the larger windows look into the internal spaces and the court. Since the cool night air settles at the base of the courtyards, the windows of surrounding rooms open at floor level.

The roof has been insulated with inverted earthen pots, packed and mixed in soft *murrām* and sealed by lime terracing. The external walls of stone masonry are made up to thin courses of three-inch thickness.

Photographs by Pradeep Soni

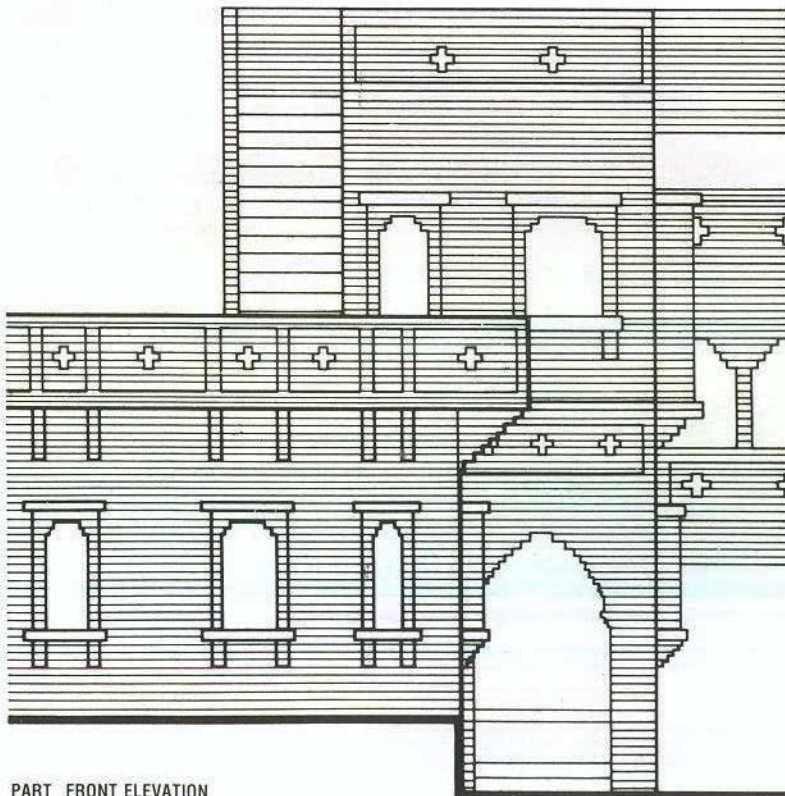
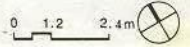


SECTION

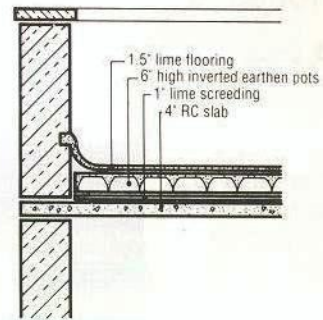


GROUND FLOOR PLAN

- | | | | |
|----|----------------|----|----------------|
| 1 | ENTRANCE COURT | 11 | FAMILY ROOM |
| 2 | ENTRANCE LOBBY | 12 | PUJA ROOM |
| 3 | CHOWK | 13 | GUEST ROOM |
| 4 | LIVING ROOM | 14 | TOILET |
| 5 | DINING ROOM | 15 | BOX ROOM |
| 6 | VERANDA | 16 | BEDROOM |
| 7 | WC | 17 | DRESSING ROOM |
| 8 | SCULLERY | 18 | GARAGE |
| 9 | KITCHEN | 19 | KITCHEN GARDEN |
| 10 | STORE | | |



PART FRONT ELEVATION



ROOF DETAIL

Owner *Shripati Mehta*
 Consultant *H C Sancheti*
 Prime contractor *Haji Mohamm.*
 Covered area *259.5 sq m*
 Cost *Rs 6,50,000*